

Activity Name	Original Duration	Planned Start	Planned Finish	2011				2012				2013				2014				2015				2016	
				Q3	Q4	Q1	Q2	Q3	Q4	Q1	Q2	Q3	Q4	Q1	Q2	Q3	Q4	Q1	Q2	Q3	Q4	Q1	Q2		
HY/2009/15 - CWB TUNNEL (CBTS SECTION)																									
SUBMISSIONS COMPLYING WITH EPs																									
EM&A Manual (rely on the Master EP's submission EP-364/2009/A Condition 2.9)																									
Baseline Monitoring Report (rely on the Master EP's submission EP-364/2009 Condition 3.3)																									
Monthly EM&A (rely on the masters EP's Submission, EP-364/2009/A Condition 3.4)																									
A dedicated website (rely on the master EP's submission, EP-364/2009/A Condition 4.2)																									
Management organization of main construction companies (FEP Condition 2.6)	1d	02-Oct-10	02-Oct-10																						
Work Schedule (FEP Condition 2.7)	1d	27-Oct-10	27-Oct-10																						
Location Plan (FEP Condition 2.8)	1d	27-Oct-10	27-Oct-10																						
Noise Management plan (FEP Condition 2.9)	1d	27-Oct-10	27-Oct-10																						
Landscape plan (FEP condition 2.10)	1d	31-Jan-11	31-Jan-11																						
EAST VENTILATION ADIT																									
CCT @ Portion 1, 2, 4, 6, 22	1315d	27-Sep-10	03-May-14																						
EV Adit @ Portion 4-Advance Works	526d	27-Sep-10	05-Mar-12																						
EV Adit Portion 1, 2, 6, 22	26d	22-Dec-11	16-Jan-12																						
EV Adit-based on Conforming Design	323d	15-Feb-12	02-Jan-13																						
TCBR1E (TS1 Area)																									
Diaphragm Wall Construction (incl. SI, & tests after completion)	107d	26-Apr-11	10-Aug-11																						
Excavation & Lateral Support, ELS	99d	16-Jul-11	22-Oct-11																						
Cut & Cover Tunnel Construction (incl. backfill)	78d	22-Oct-11	07-Jan-12																						
OHVD and Cable Trough (access from Portion 22)	76d	18-Dec-13	03-Mar-14																						
TCBR2 + TCBR3 (TS2 Area)																									
Diaphragm Wall Construction	118d	06-Jul-12	31-Oct-12																						
Excavation & Lateral Support, ELS	248d	06-Jul-12	10-Mar-13																						
Cut & Cover Tunnel Construction	164d	11-Mar-13	21-Aug-13																						
OHVD Cable Trough (Access from Portion 22)	150d	05-Aug-13	01-Jan-14																						
TCBR1W (TS4 Area)																									
Diaphragm Wall Construction	148d	28-Jun-11	22-Nov-11																						
Excavation & Lateral Support, ELS	319d	26-Jun-11	11-May-12																						
Landing Steps - Demolition/Reconstruct as footpath	40d	28-Jun-11	23-Aug-11																						

- ◆ Milestone
- ◆ Milestone
- ▬ Remaining Work
- ▬ Critical Remaining Work
- ▬ Actual Work

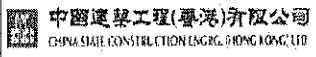
1 of 2

China State Construction Engineering (Hong Kong) Ltd.

Contract No. HY/2009/15 - Central Wan Chai By Pass - Tunnel

(CBTS Section)

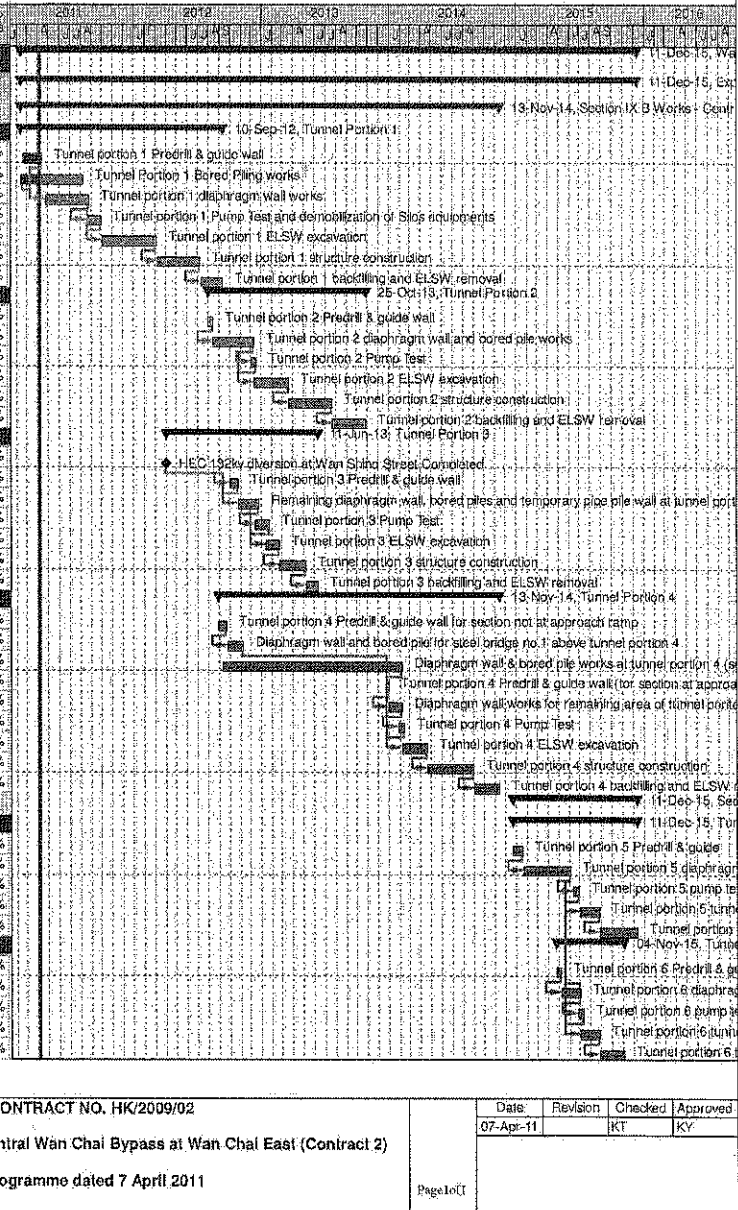
Prepared by William Caluza			
Date	Revision	Checked	Approved
14-Mar-11	Revision C	ST	KL
	File: 0001a		
	(Layout:HY/2009/15: CWB - Summary)		



Wan Chai Development Phase II - Central - Wan Chai
Bypass at Wan Chai East CONTRACT HK/2009/02

CHUN WO - CRGL JV

Activity ID	Activity Name	OD	Plan	Finish	% Planned	2011	2012	2013	2014	2015	2016
Wan Chai Development Phase II - Central - Wan Chai Bypass at Wan Chai East											
Expanded and More Detailed Initial Works Programme											
Section IX B Works - Central - Wan Chai Bypass Tunnel Structure from chainage 3400 to eastern tunnel											
Tunnel Portion 1											
S9B-T1-0005	Tunnel portion 1 Predrill & guide wall	10	18-Feb-11	13-Apr-11	40%						
S9B-T1-0007	Tunnel Portion 1 Bored Piling works	105	09-Feb-11	08-Aug-11	0%						
S9B-T1-0010	Tunnel portion 1 diaphragm wall works	105	26-Apr-11	27-Aug-11	0%						
S9B-T1-0015	Tunnel portion 1 Pump Test and demobilization of Slos equipments	35	20-Aug-11	30-Sep-11	0%						
S9B-T1-0020	Tunnel portion 1 ELSW excavation	130	03-Oct-11	07-Mar-12	0%						
S9B-T1-0030	Tunnel portion 1 structure construction	100	09-Mar-12	09-Jul-12	0%						
S9B-T1-0040	Tunnel portion 1 backfilling and ELSW removal	54	10-Jul-12	10-Sep-12	0%						
Tunnel Portion 2											
S9B-T2-0105	Tunnel portion 2 Predrill & guide wall	10	02-Aug-12	13-Aug-12	0%						
S9B-T2-0010	Tunnel portion 2 diaphragm wall and bored pile works	100	14-Aug-12	10-Dec-12	0%						
S9B-T2-0015	Tunnel portion 2 Pump Test	14	03-Dec-12	18-Dec-12	0%						
S9B-T2-0020	Tunnel portion 2 ELSW excavation	80	11-Dec-12	19-Mar-13	0%						
S9B-T2-0030	Tunnel portion 2 structure construction	100	20-Mar-13	22-Jul-13	0%						
S9B-T2-0040	Tunnel portion 2 backfilling and ELSW removal	80	23-Jul-13	25-Oct-13	0%						
Tunnel Portion 3											
S9B-T3-0005	HEC 132kv diversion at Wan Shing Street Completed	0	01-Apr-12*		0%						
S9B-T3-0008	Tunnel portion 3 Predrill & guide wall	20	02-Oct-12	25-Oct-12	0%						
S9B-T3-0010	Remaining diaphragm wall, bored piles and temporary pipe pile wall at tunnel portion 3.	50	25-Oct-12	22-Dec-12	0%						
S9B-T3-0015	Tunnel portion 3 Pump Test	30	15-Dec-12	22-Jan-13	0%						
S9B-T3-0020	Tunnel portion 3 ELSW excavation	30	15-Jan-13	20-Feb-13	0%						
S9B-T3-0030	Tunnel portion 3 structure construction	80	21-Feb-13	08-May-13	0%						
S9B-T3-0040	Tunnel portion 3 backfilling and ELSW removal	30	07-May-13	11-Jun-13	0%						
Tunnel Portion 4											
S9B-T4-0005	Tunnel portion 4 Predrill & guide wall for section not at approach ramp	21	30-Aug-12	22-Sep-12	0%						
S9B-T4-0010	Diaphragm wall and bored pile for steel bridge no.1 above tunnel portion 4	40	24-Sep-12	10-Nov-12	0%						
S9B-T4-0020	Diaphragm wall & bored pile works at tunnel portion 4 (section not at approach ramp)	420	11-Sep-12	05-Feb-14	0%						
S9B-T4-0025	Tunnel portion 4 Predrill & guide wall (for section at approach ramp)	5	23-Dec-13	30-Dec-13	0%						
S9B-T4-0030	Diaphragm wall works for remaining area of tunnel portion 4 (for section at approach ramp)	30	31-Dec-13	06-Feb-14	0%						
S9B-T4-0035	Tunnel portion 4 Pump Test	14	28-Jan-14	14-Feb-14	0%						
S9B-T4-0040	Tunnel portion 4 ELSW excavation	60	07-Feb-14	19-Apr-14	0%						
S9B-T4-0050	Tunnel portion 4 structure construction	110	22-Apr-14	01-Sep-14	0%						
S9B-T4-0060	Tunnel portion 4 backfilling and ELSW removal	60	02-Sep-14	13-Nov-14	0%						
Section X Works - Central - Wan Chai Bypass Tunnel Structure from western tunnel to chainage 3400											
Tunnel Portion 5											
S10-T5-0005	Tunnel portion 5 Predrill & guide	21	23-Dec-14	19-Jan-15	0%						
S10-T5-0010	Tunnel portion 5 diaphragm wall & bored pile works	110	20-Jan-15	04-Jun-15	0%						
S10-T5-0015	Tunnel portion 5 pump test	14	13-Jun-15	30-Jun-15	0%						
S10-T5-0020	Tunnel portion 5 tunnel ELSW excavation	45	04-Jul-15	25-Aug-15	0%						
S10-T5-0030	Tunnel portion 5 tunnel structure construction	90	26-Aug-15	11-Dec-15	0%						
Tunnel Portion 6											
S10-T6-0040	Tunnel portion 6 Predrill & guide	12	24-Apr-15	08-May-15	0%						
S10-T6-0050	Tunnel portion 6 diaphragm wall & bored pile works at Area 10	45	09-May-15	09-Jul-15	0%						
S10-T6-0055	Tunnel portion 6 pump test	14	25-Jun-15	11-Jul-15	0%						
S10-T6-0060	Tunnel portion 6 tunnel ELSW excavation at Area 10	45	04-Jul-15	25-Aug-15	0%						
S10-T6-0070	Tunnel portion 6 tunnel structure construction at Area 10	58	26-Aug-15	04-Nov-15	0%						



CEDD CONTRACT NO. HK/2009/02
Wan Chai Development Phase II - Central Wan Chai Bypass at Wan Chai East (Contract 2)
 Revised Programme dated 7 April 2011

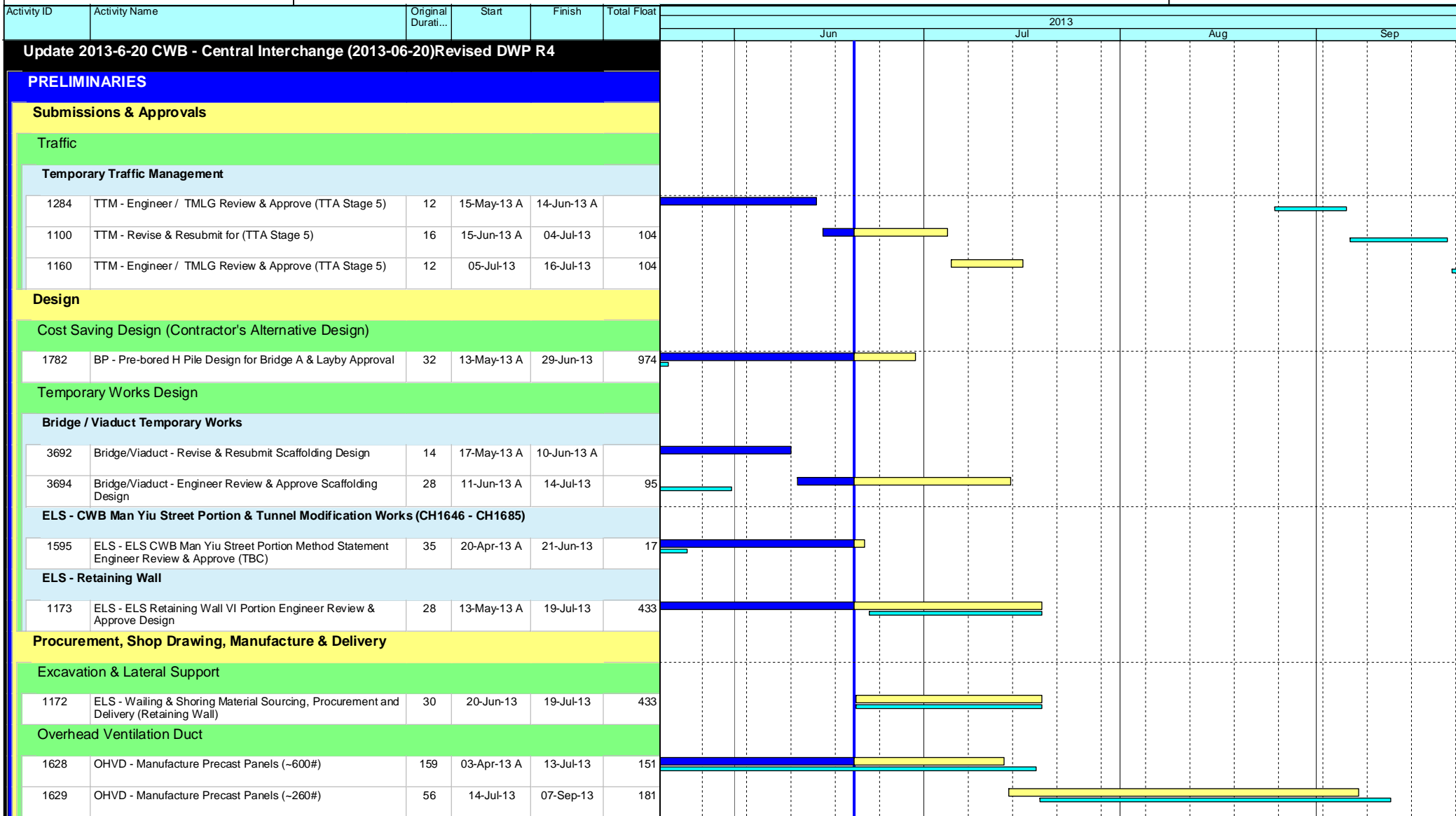
Date	Revision	Checked	Approved
07-Apr-11		KT	KY

Page 10 of 11

HY/2009/18 Central - Wan Chai Bypass (Central Interchange)



TASK filters: 3 Months_1, Not HL.



	Current Milestone		Critical Remaining Work
	Level of Effort		Remaining Work
	Baseline Milestone		Project Baseline
	Actual Work		

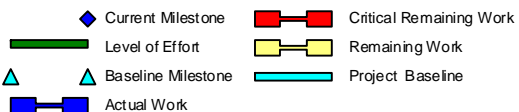
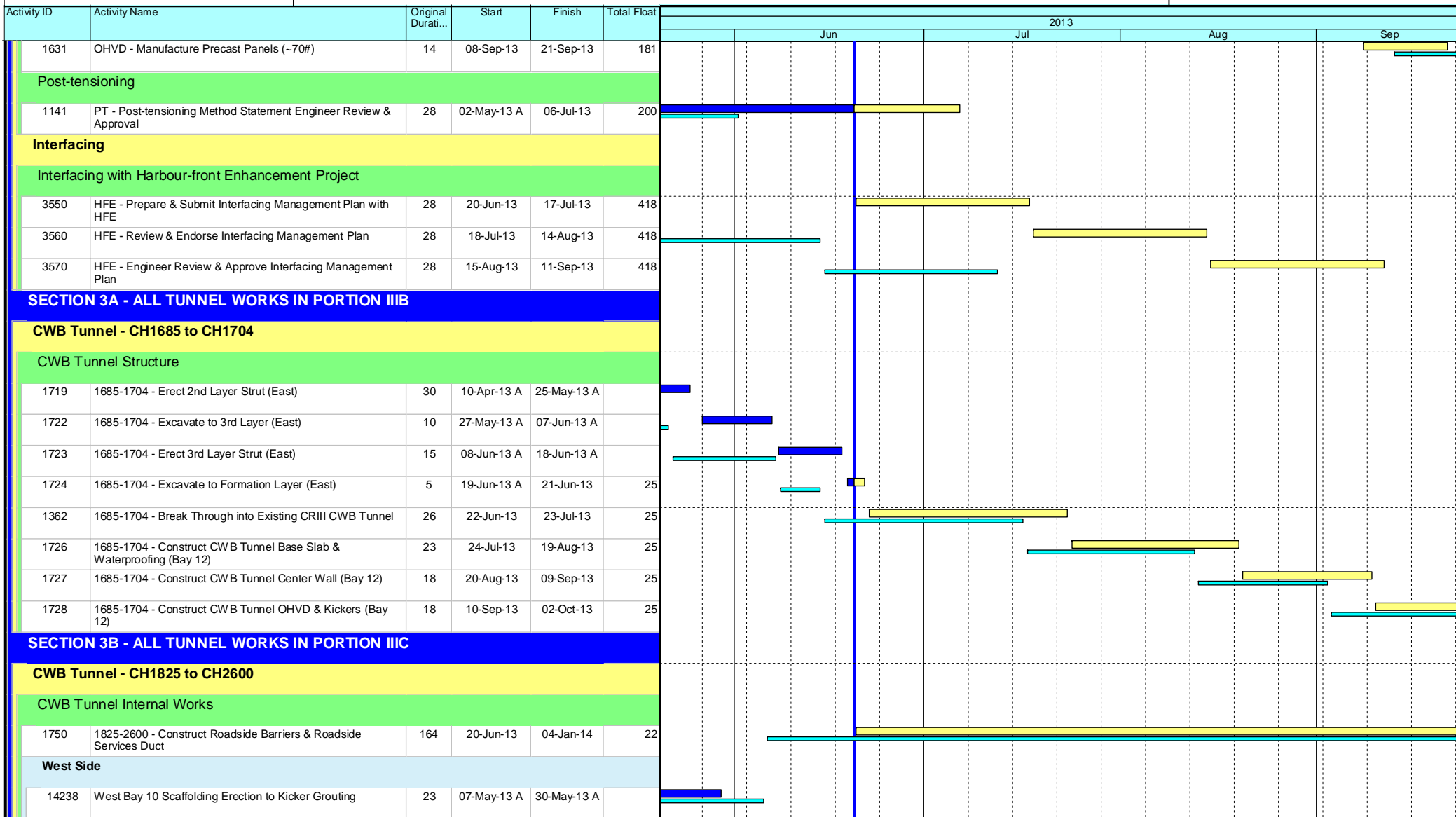
Leighton Contractors (Asia) Limited Programme Update 33 (June 2013) THREE MONTH ROLLING

Project ID: U033
Baseline: DCP4-4
Layout: Update Three Month Rolling U033
Page 1 of 10

Date	Revision	Checked	Approv...
21-May-13	U032	AT	RW
21-Jun-13	U033	AT	RW

HY/2009/18 Central - Wan Chai Bypass (Central Interchange)

TASK filters: 3 Months_1, Not HL.



Leighton Contractors (Asia) Limited Programme Update 33 (June 2013) THREE MONTH ROLLING

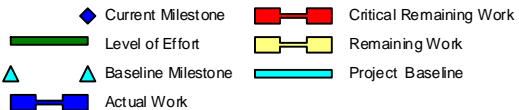
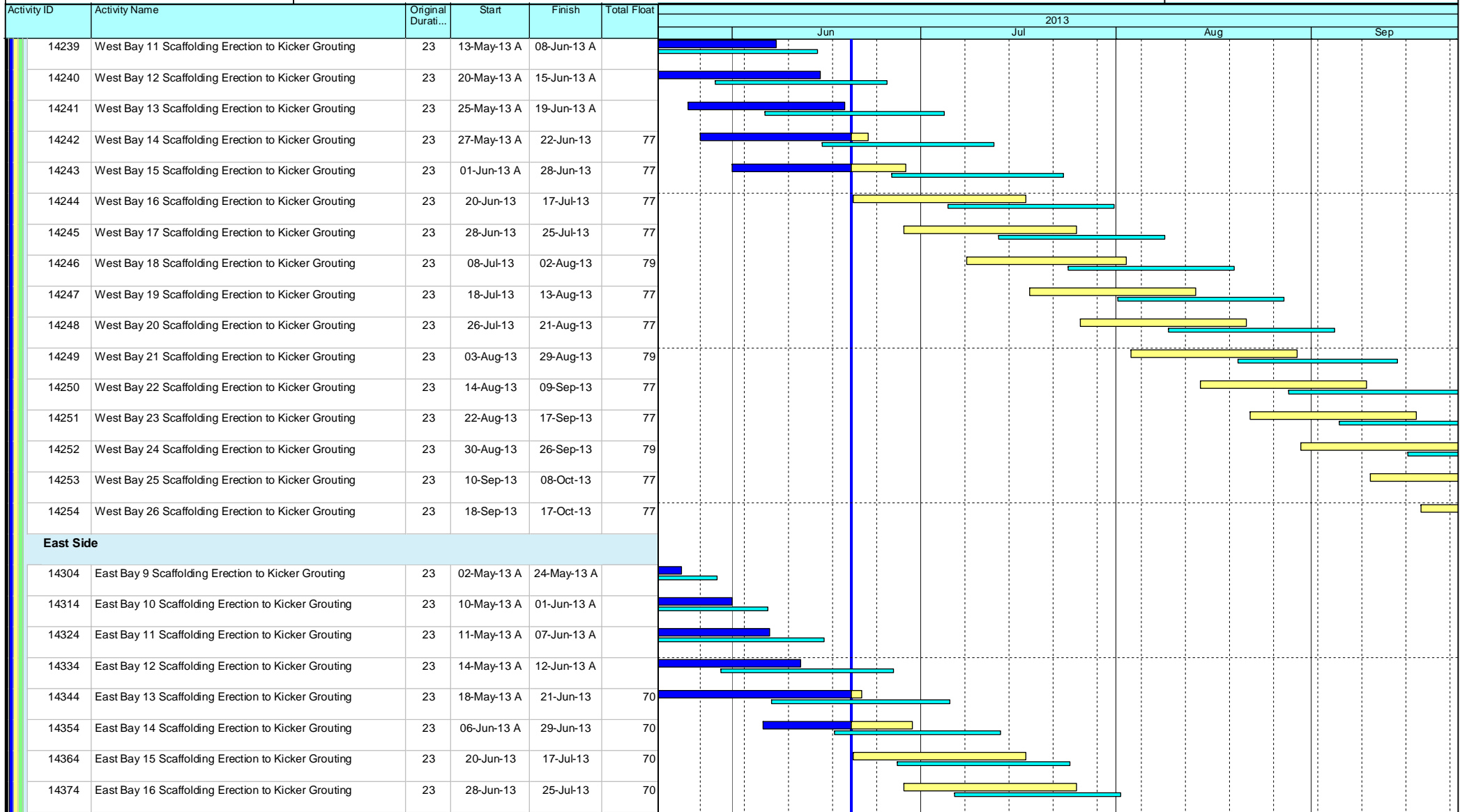
Project ID: U033
Baseline: DCP4-4
Layout: Update Three Month Rolling U033
Page 2 of 10

Date	Revision	Checked	Approv...
21-May-13	U032	AT	RW
21-Jun-13	U033	AT	RW

HY/2009/18 Central - Wan Chai Bypass (Central Interchange)



TASK filters: 3 Months_1, Not HL.



Leighton Contractors (Asia) Limited Programme Update 33 (June 2013) THREE MONTH ROLLING

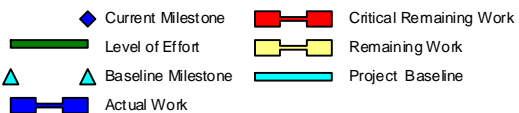
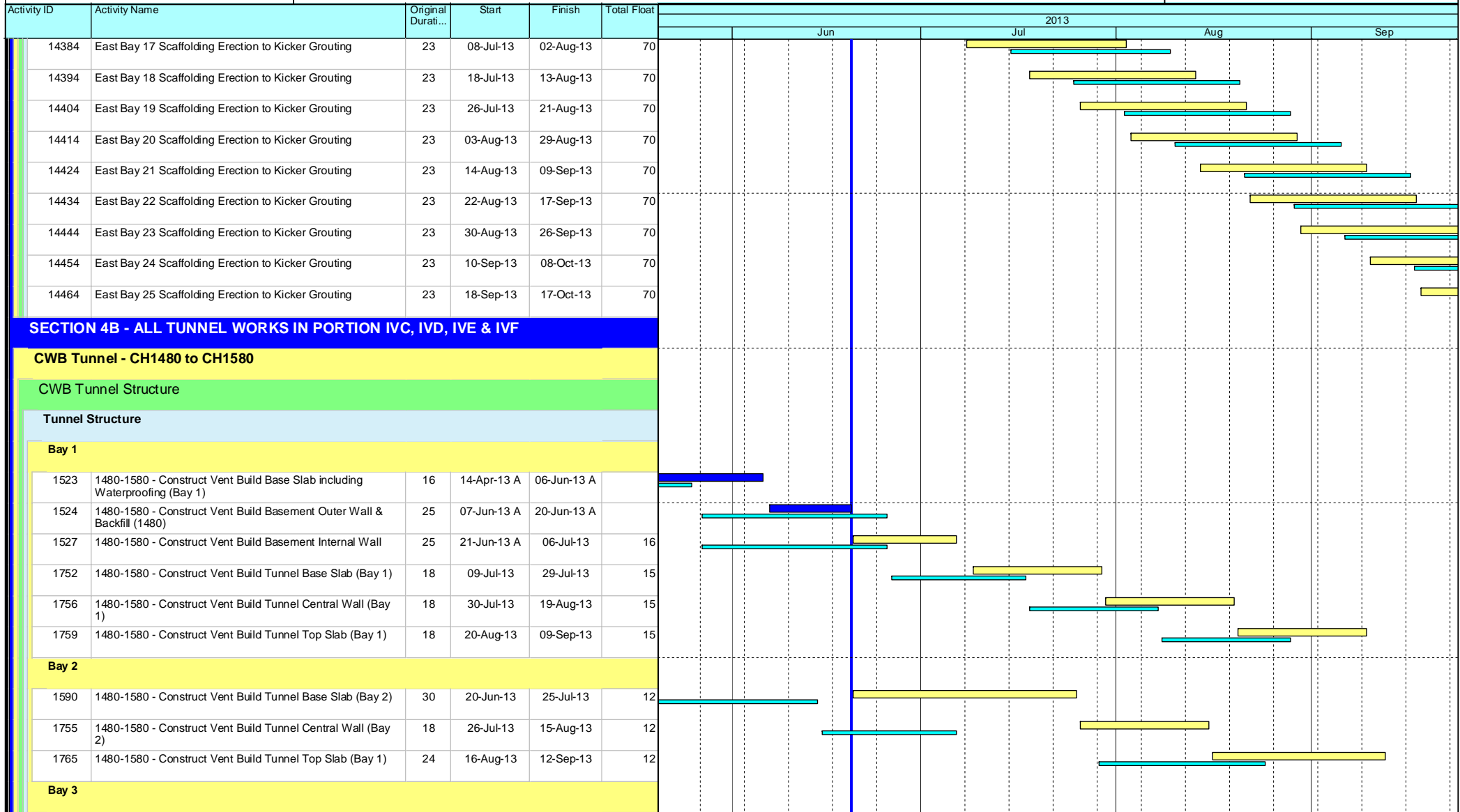
Project ID: U033
Baseline: DCP4-4
Layout: Update Three Month Rolling U033
Page 3 of 10

Date	Revision	Checked	Approv...
21-May-13	U032	AT	RW
21-Jun-13	U033	AT	RW

HY/2009/18 Central - Wan Chai Bypass (Central Interchange)



TASK filters: 3 Months_1, Not HL.



Leighton Contractors (Asia) Limited Programme Update 33 (June 2013) THREE MONTH ROLLING

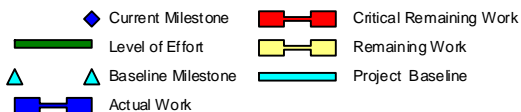
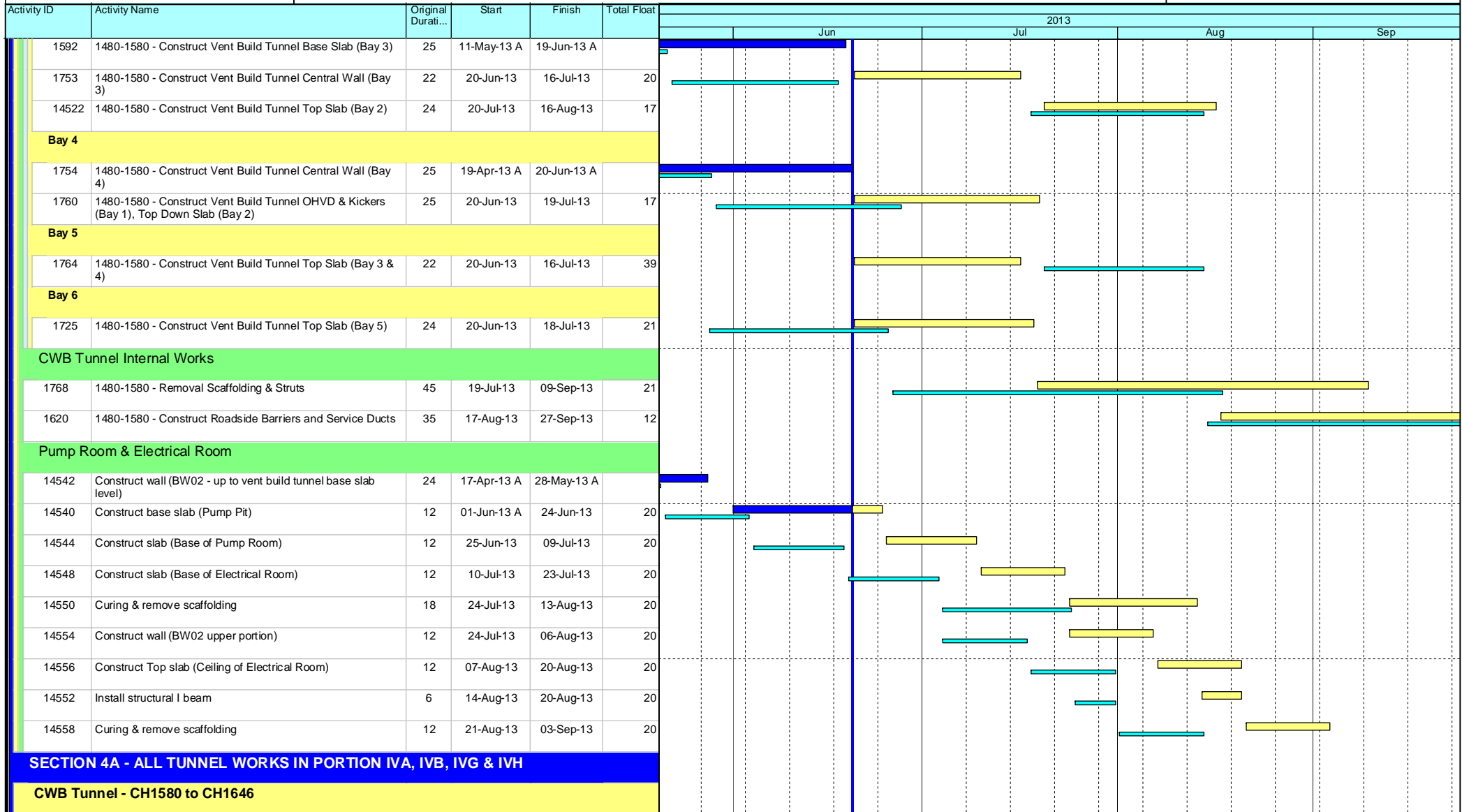
Project ID: U033
 Baseline: DCP4-4
 Layout: Update Three Month Rolling U033
 Page 4 of 10

Date	Revision	Checked	Approv...
21-May-13	U032	AT	RW
21-Jun-13	U033	AT	RW

HY/2009/18 Central - Wan Chai Bypass (Central Interchange)



TASK filters: 3 Months_1, Not HL.



Leighton Contractors (Asia) Limited Programme Update 33 (June 2013) THREE MONTH ROLLING

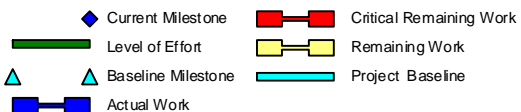
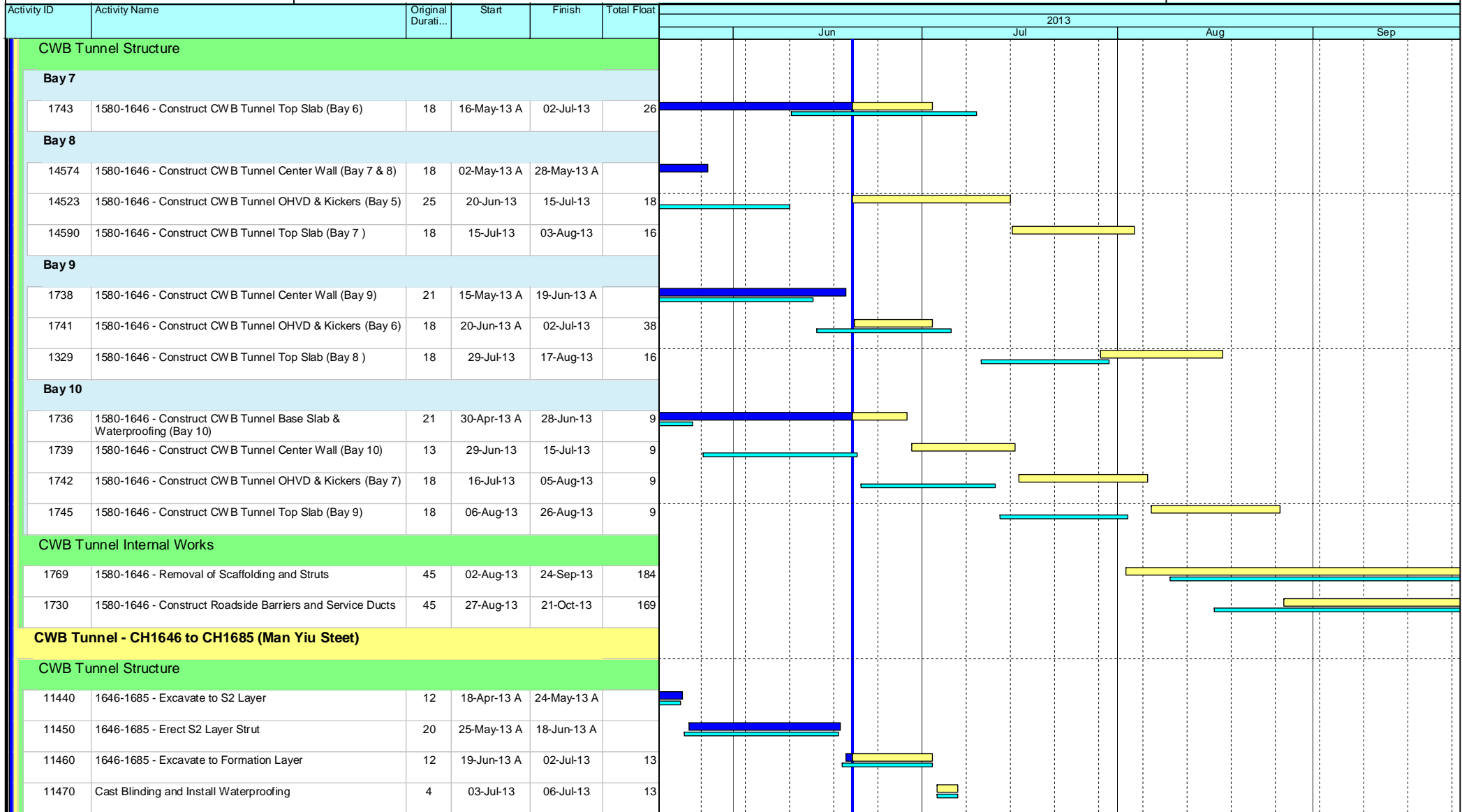
Project ID: U033
Baseline: DCP4-4
Layout: Update Three Month Rolling U033
Page 5 of 10

Date	Revision	Checked	Approv...
21-May-13	U032	AT	RW
21-Jun-13	U033	AT	RW

HY/2009/18 Central - Wan Chai Bypass (Central Interchange)



TASK filters: 3 Months_1, Not HL.



Leighton Contractors (Asia) Limited Programme Update 33 (June 2013) THREE MONTH ROLLING

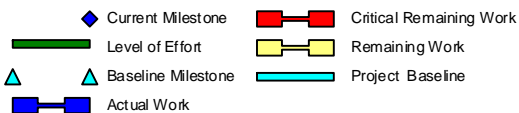
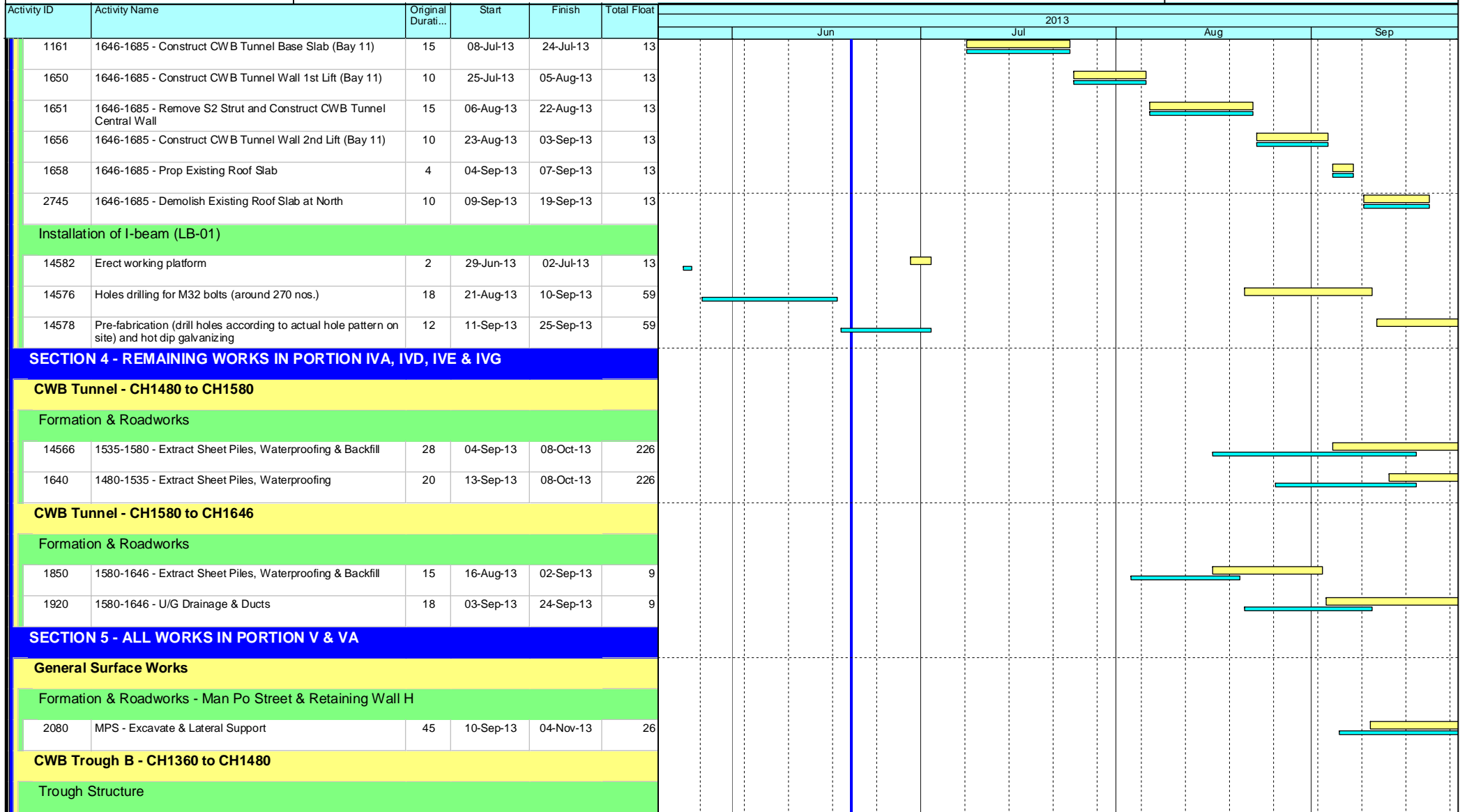
Project ID: U033
 Baseline: DCP4-4
 Layout: Update Three Month Rolling U033
 Page 6 of 10

Date	Revision	Checked	Approv...
21-May-13	U032	AT	RW
21-Jun-13	U033	AT	RW

HY/2009/18 Central - Wan Chai Bypass (Central Interchange)



TASK filters: 3 Months_1, Not HL.



Leighton Contractors (Asia) Limited Programme Update 33 (June 2013) THREE MONTH ROLLING

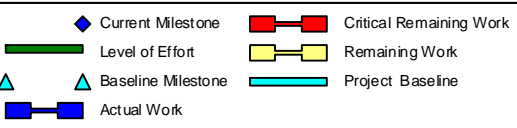
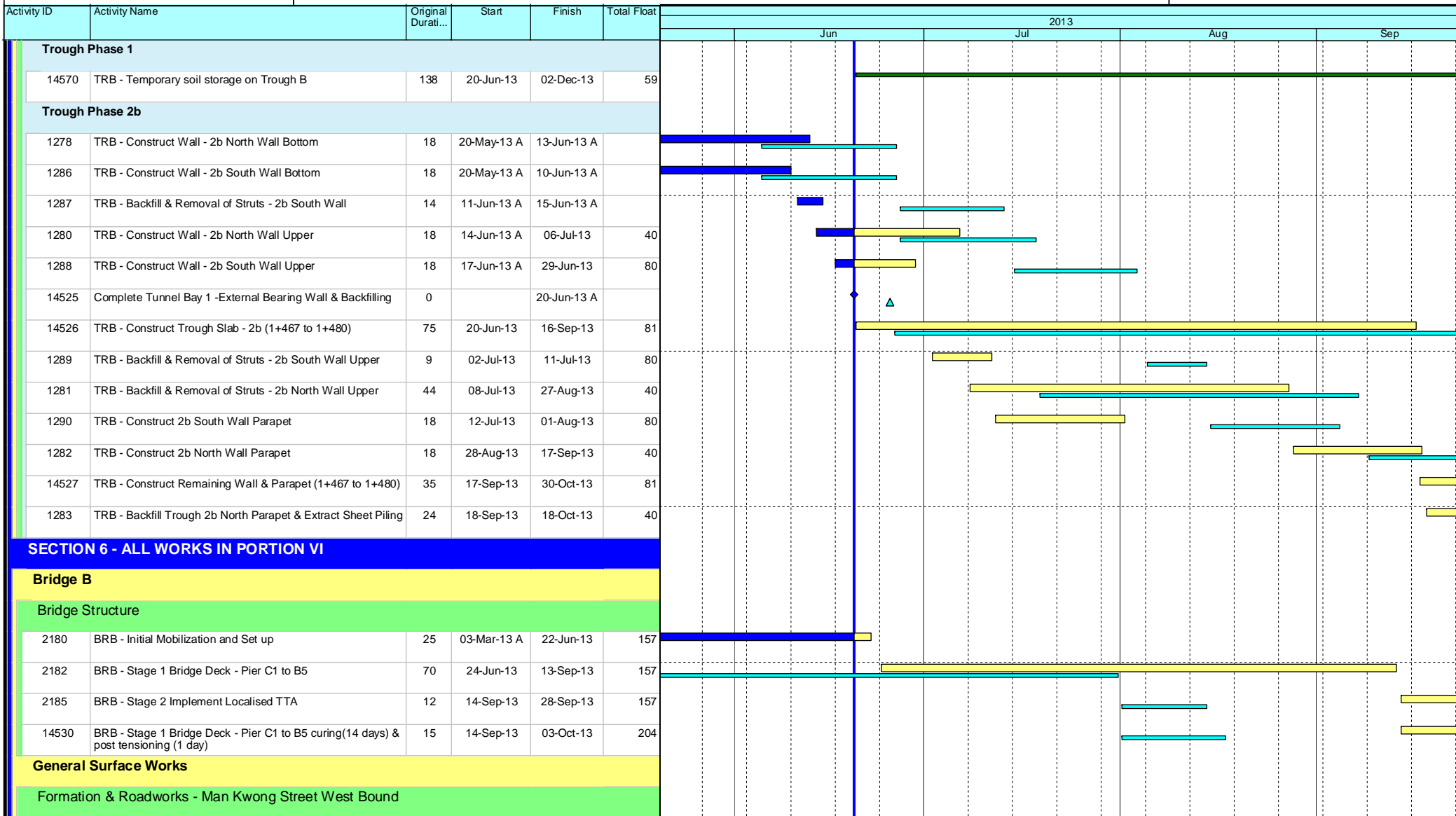
Project ID: U033
 Baseline: DCP4-4
 Layout: Update Three Month Rolling U033
 Page 7 of 10

Date	Revision	Checked	Approv...
21-May-13	U032	AT	RW
21-Jun-13	U033	AT	RW

HY/2009/18 Central - Wan Chai Bypass (Central Interchange)



TASK filters: 3 Months_1, Not HL.



Leighton Contractors (Asia) Limited Programme Update 33 (June 2013) THREE MONTH ROLLING

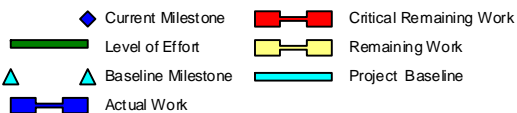
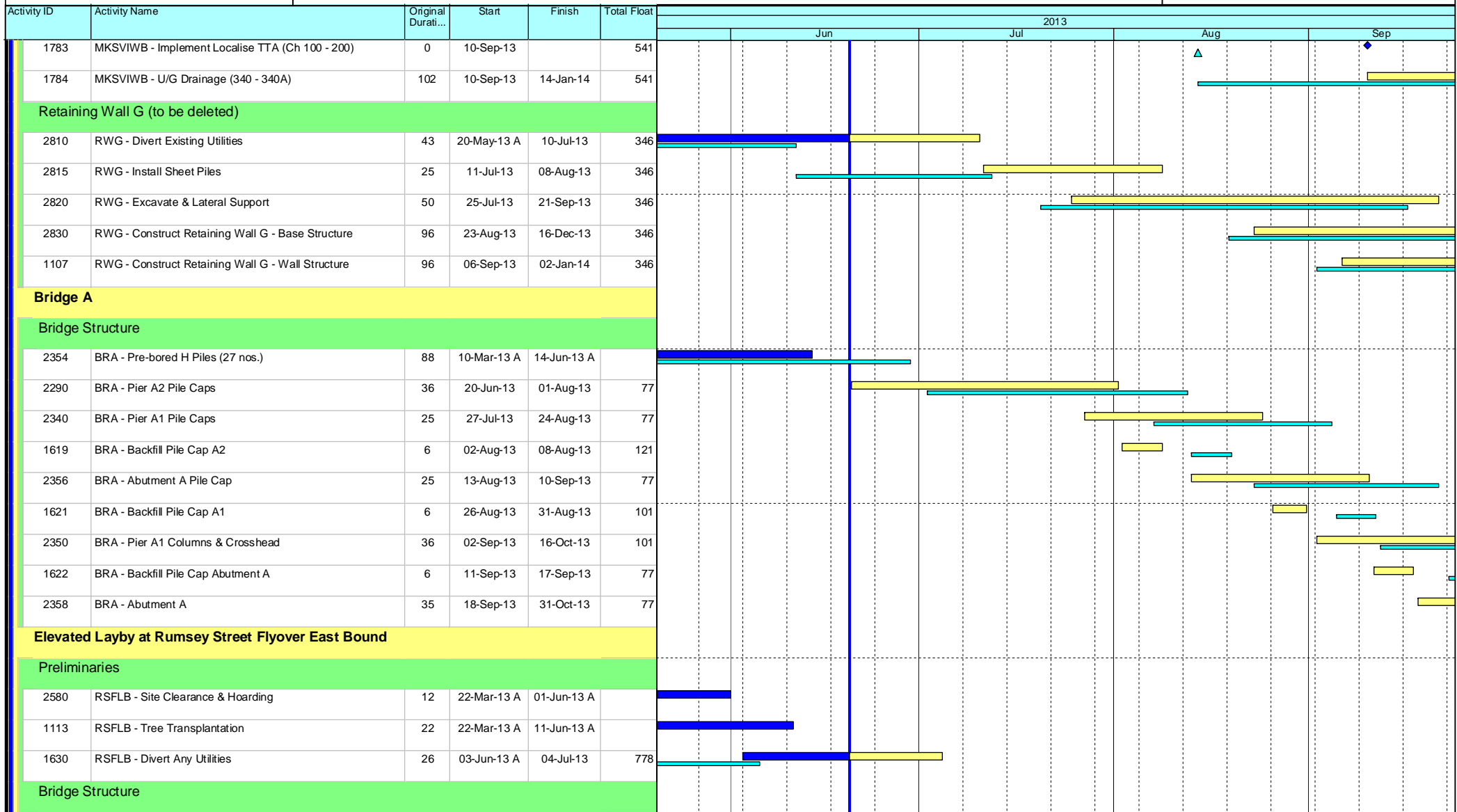
Project ID: U033
 Baseline: DCP4-4
 Layout: Update Three Month Rolling U033
 Page 8 of 10

Date	Revision	Checked	Approv...
21-May-13	U032	AT	RW
21-Jun-13	U033	AT	RW

HY/2009/18 Central - Wan Chai Bypass (Central Interchange)



TASK filters: 3 Months_1, Not HL.



Leighton Contractors (Asia) Limited Programme Update 33 (June 2013) THREE MONTH ROLLING

Project ID: U033
 Baseline: DCP4-4
 Layout: Update Three Month Rolling U033
 Page 9 of 10

Date	Revision	Checked	Approv...
21-May-13	U032	AT	RW
21-Jun-13	U033	AT	RW

Data Date: 20-Jun-13

HY/2009/18 Central - Wan Chai Bypass (Central Interchange)



TASK filters: 3 Months_1, Not HL.

Activity ID	Activity Name	Original Durati...	Start	Finish	Total Float	2013																
						Jun				Jul				Aug				Sep				
						2720	RSFLB - Pier E1/E2 Prebored H-Piles (2 nos.)	21	05-Jul-13	29-Jul-13	778											
1101	RSFLB - Loading Test	28	30-Jul-13	30-Aug-13	778																	
2730	RSFLB - Pier E1/E2 Pile Caps	25	31-Aug-13	30-Sep-13	778																	

- Current Milestone
- Critical Remaining Work
- Level of Effort
- Remaining Work
- Baseline Milestone
- Project Baseline
- Actual Work

Leighton Contractors (Asia) Limited Programme Update 33 (June 2013) THREE MONTH ROLLING

Project ID: U033
 Baseline: DCP4-4
 Layout: Update Three Month Rolling U033
 Page 10 of 10

Date	Revision	Checked	Approv...
21-May-13	U032	AT	RW
21-Jun-13	U033	AT	RW

Activity ID	Activity Name	Rem Dur	Start	Finish	2013																							
					June						July						August						September					
					0	27	03	10	17	24	01	08	15	22	29	05	12	19	26	02	09	16						
3MRP - Jun 2013 to Sep 2013																												
02 - PRE-CONSTRUCTION WORKS																												
02.2 - Contractor's Submission																												
0220-1360	Tunnel Structures Materials - Submission	6	19-Jul-12 A	25-Jun-13	Tunnel Structures Materials - Submission																							
0220-1370	Tunnel Structures Materials - ER Review/Comment	6	14-Jan-13 A	25-Jun-13	Tunnel Structures Materials - ER Review/Comment																							
0220-1380	Tunnel Structures Materials - Resubmission	12	28-Jan-13 A	01-Jul-13	Tunnel Structures Materials - Resubmission																							
0220-1390	Tunnel Structures Materials - ER Approval	12	15-Mar-13 A	13-Jul-13	Tunnel Structures Materials - ER Approval																							
0220-1400	Tunnel Structures Materials - Procurement & Delivery	42	14-Jul-13	24-Aug-13	Tunnel Structures Materials - Proc																							
02.3 - Method Statement / Shop Drawings																												
0230-1700	MS Temporary Bridge TA1 - Submission	6	15-May-13 A	25-Jun-13	MS Temporary Bridge TA1 - Submission																							
0230-1710	MS Temporary Bridge TA1 - ER Review & Comment	12	26-Jun-13	07-Jul-13	MS Temporary Bridge TA1 - ER Review & Comment																							
0230-1720	MS Temporary Bridge TA1 - Resubmission	6	08-Jul-13	13-Jul-13	MS Temporary Bridge TA1 - Resubmission																							
0230-1730	MS Temporary Bridge TA1 - ER Approval	18	14-Jul-13	31-Jul-13	MS Temporary Bridge TA1 - ER Approval																							
0230-1920	MS Marine Temp Pile Removal - Resubmission	9	20-Jun-13	28-Jun-13	MS Marine Temp Pile Removal - Resubmission																							
0230-1930	MS Marine Temp Pile Removal - ER Approval	9	29-Jun-13	07-Jul-13	MS Marine Temp Pile Removal -ER Approval																							
02.4 - Contractor's Design and Build Items																												
0240-1030	Temp Bridge "TA1" Design - Resubmission	6	19-Mar-13 A	25-Jun-13	Temp Bridge "TA1" Design - Resubmission																							
0240-1035	Temp Bridge "TA1" Design - ER Approval	21	26-Jun-13	16-Jul-13	Temp Bridge "TA1" Design - ER Approval																							
0240-1040	Temp Bridge "TA1" - Fabrication	48	26-Jun-13	12-Aug-13	Temp Bridge "TA1" - Fabrication																							
0240-1041	Temp Bridge "TD" Design - Submission	18	01-Mar-13 A	07-Jul-13	Temp Bridge "TD" Design - Submission																							
0240-1042	Temp Bridge "TD" Design - ER review and comment	28	08-Jul-13	04-Aug-13	Temp Bridge "TD" Design - ER review and comment																							
0240-1043	Temp Bridge "TD" Design - Resubmission	36	05-Aug-13	09-Sep-13	Temp Bridge																							
0240-1044	Temp Bridge "TD" Design - ER Approval	28	10-Sep-13	07-Oct-13																								
0240-1105	Int. Noise Enclosure Structural Design - Submission	9	20-Mar-13 A	28-Jun-13	Int. Noise Enclosure Structural Design - Submission																							
0240-1110	Int. Noise Enclosure Structural Design - ER Review/Resubmission	48	29-Jun-13	15-Aug-13	Int. Noise Enclosure Structural Design - ER Re																							
0240-1112	Int. Noise Enclosure Structural Design - ER Approval	28	16-Aug-13	12-Sep-13	Int. Noi																							
0240-1126	Noise Barrier Design Structural Design - Submission	6	20-Mar-13 A	25-Jun-13	Noise Barrier Design Structural Design - Submission																							
0240-1127	Noise Barrier Design Structural Design - ER Review/Resubmission	48	26-Jun-13	12-Aug-13	Noise Barrier Design Structural Design - ER Review																							
0240-1128	Noise Barrier Design Structural Design - ER Approval	28	13-Aug-13	09-Sep-13	Noise Barrie																							
0240-1129	Noise Barrier Design - Procurement/Fabrication/Delivery	180	10-Sep-13	08-Mar-14																								
0240-1150	Perm. Noise Enclosure Structural Design - Submission	9	20-Mar-13 A	28-Jun-13	Perm. Noise Enclosure Structural Design - Submission																							
0240-1160	Perm. Noise Enclosure Structural Design - ER Review/Resubmission	48	29-Jun-13	15-Aug-13	Perm. Noise Enclosure Structural Design - ER																							
0240-1161	Perm. Noise Enclosure Structural Design - ER Approval	28	16-Aug-13	12-Sep-13	Perm. N																							
02.5 - Bridge Segment/Beam Off-site Precasting																												
0250-1700.005	Bridge Precast Beam Casting Bridge F4 Beam 2-1	0	20-May-13 A	31-May-13 A	Bridge Precast Beam Casting Bridge F4 Beam 2-1																							
0250-1700.06	Bridge Precast Beam Casting Bridge F4 Beam 2-2	0	01-Jun-13 A	08-Jun-13 A	Bridge Precast Beam Casting Bridge F4 Beam 2-2																							
0250-1700.07	Bridge Precast Beam Casting Bridge F4 Beam 3-1	0	09-Jun-13 A	16-Jun-13 A	Bridge Precast Beam Casting Bridge F4 Beam 3-1																							
0250-1700.08	Bridge Precast Beam Casting Bridge F4 Beam 4-1	12	17-Jun-13 A	01-Jul-13	Bridge Precast Beam Casting Bridge F4 Beam 4-1																							
0250-1700.09	Bridge Precast Beam Casting Bridge F4 Beam 5-1	12	17-Jun-13 A	01-Jul-13	Bridge Precast Beam Casting Bridge F4 Beam 5-1																							
0250-1700.10	Bridge Precast Beam Casting Bridge F4 Beam 6-1	14	02-Jul-13	15-Jul-13	Bridge Precast Beam Casting Bridge F4 Beam 6-1																							
0250-1700.11	Bridge Precast Beam Casting Bridge E Beam E2E1-A	14	02-Jul-13	15-Jul-13	Bridge Precast Beam Casting Bridge E Beam E2E1-A																							
0250-1700.21	Bridge Precast Beam Casting Bridge E Beam E2E1-B	14	16-Jul-13	29-Jul-13	Bridge Precast Beam Casting Bridge E Beam E2E1-B																							
0250-1700.31	Bridge Precast Beam Casting Bridge E Beam E2E1-C	14	16-Jul-13	29-Jul-13	Bridge Precast Beam Casting Bridge E Beam E2E1-C																							
0250-1700.41	Bridge Precast Beam Casting Bridge E Beam E1D1-A	14	30-Jul-13	12-Aug-13	Bridge Precast Beam Casting Bridge E Beam E1D1																							

- Remaining Level of Effort
- Actual Level of Effort
- Actual Work
- Remaining Work
- Critical Remaining Work
- ◆ Milestone

Contract HY/2009/19

Three Month Rolling Programme (20 Jun 2013 to 19 Sep 2013)

3MRP

3MRP - Jun 2013 to Sep 2013

Page 1 of 7

Activity ID	Activity Name	Rem Dur	Start	Finish	2013																							
					June						July						August						September					
					0	27	03	10	17	24	01	08	15	22	29	05	12	19	26	02	09	16						
0521-2135	D-wall S56-S59 Construction (6 nos@6d - Team 4)	36	13-Aug-13	24-Sep-13	[Gantt bar: 13-Aug-13 to 24-Sep-13]																							
0521-1900.20	D-wall Panel N73	14	19-Aug-13	03-Sep-13	[Gantt bar: 19-Aug-13 to 03-Sep-13]																							
0521-1900.15	D-wall Panel N72	14	04-Sep-13	19-Sep-13	[Gantt bar: 04-Sep-13 to 19-Sep-13]																							
05.2.2 - Barrette Construction																												
0522-2210.51	Barrette Pile BC41	0	30-Apr-13 A	10-Jun-13 A	[Gantt bar: 30-Apr-13 A to 10-Jun-13 A]																							
0522-2210.83	Barrette Pile BC50	0	20-Apr-13 A	05-Jun-13 A	[Gantt bar: 20-Apr-13 A to 05-Jun-13 A]																							
0522-2210.90	Barrette Pile BC49	0	26-Apr-13 A	10-Jun-13 A	[Gantt bar: 26-Apr-13 A to 10-Jun-13 A]																							
0522-2210.84	Barrette Pile BC42	12	20-Jun-13	04-Jul-13	[Gantt bar: 20-Jun-13 to 04-Jul-13]																							
0522-2210.86	Barrette Pile BC46	8	29-May-13 A	28-Jun-13	[Gantt bar: 29-May-13 A to 28-Jun-13]																							
0522-2210.89	Barrette Pile BC44	7	10-May-13 A	27-Jun-13	[Gantt bar: 10-May-13 A to 27-Jun-13]																							
0522-2210.88	Barrette Pile BC43	12	28-Jun-13	12-Jul-13	[Gantt bar: 28-Jun-13 to 12-Jul-13]																							
0522-2390.10	Bulkhead BW4	9	17-Jun-13 A	29-Jun-13	[Gantt bar: 17-Jun-13 A to 29-Jun-13]																							
0522-2390.30	Bulkhead BW3	10	02-Jul-13	12-Jul-13	[Gantt bar: 02-Jul-13 to 12-Jul-13]																							
0522-2210.53	Barrette Pile BC53	12	13-Jul-13	26-Jul-13	[Gantt bar: 13-Jul-13 to 26-Jul-13]																							
05.2.3 - ELS																												
0524-2883.2	Tunnel Phase 1 Zone 3 - LS + Preload	0	13-May-13 A	19-Jun-13 A	[Gantt bar: 13-May-13 A to 19-Jun-13 A]																							
0524-2884.1	Tunnel Phase 1 Zone 4 - Excav	3	23-May-13 A	22-Jun-13	[Gantt bar: 23-May-13 A to 22-Jun-13]																							
0524-2884.2	Tunnel Phase 1 Zone 4 - LS + Preload	11	20-Jun-13	03-Jul-13	[Gantt bar: 20-Jun-13 to 03-Jul-13]																							
0524-2885.1	Tunnel Phase 1 Zone 5 - Excav	14	01-Jun-13 A	08-Jul-13	[Gantt bar: 01-Jun-13 A to 08-Jul-13]																							
0524-2885.2	Tunnel Phase 1 Zone 5 - LS + Preload	18	20-Jun-13	11-Jul-13	[Gantt bar: 20-Jun-13 to 11-Jul-13]																							
0524-2886	Tunnel Phase 1 Zone 6 - Excav	5	08-Jul-13	13-Jul-13	[Gantt bar: 08-Jul-13 to 13-Jul-13]																							
0524-2887	Tunnel Phase 1 Zone 7 - Excav	8	13-Jul-13	23-Jul-13	[Gantt bar: 13-Jul-13 to 23-Jul-13]																							
0524-2888	Tunnel Phase 2 Zone 2 - Excav	5	08-Apr-13 A	29-Jul-13	[Gantt bar: 08-Apr-13 A to 29-Jul-13]																							
0524-2889	Tunnel Phase 2 Zone 2 - LS + Preload	7	15-Apr-13 A	06-Aug-13	[Gantt bar: 15-Apr-13 A to 06-Aug-13]																							
0524-2905	Tunnel Phase 2 Zone 3 - Excav	12	29-Jul-13	12-Aug-13	[Gantt bar: 29-Jul-13 to 12-Aug-13]																							
0524-2915	Tunnel Phase 2 Zone 3 - LS + Preload	10	06-Aug-13	17-Aug-13	[Gantt bar: 06-Aug-13 to 17-Aug-13]																							
0524-2925	Tunnel Phase 2 Zone 4 - Excav	7	17-Aug-13	26-Aug-13	[Gantt bar: 17-Aug-13 to 26-Aug-13]																							
0524-2935	Tunnel Phase 2 Zone 4 - LS + Preload	7	26-Aug-13	03-Sep-13	[Gantt bar: 26-Aug-13 to 03-Sep-13]																							
0524-2945	Tunnel Phase 2 Zone 5 - Excav	15	26-Aug-13	12-Sep-13	[Gantt bar: 26-Aug-13 to 12-Sep-13]																							
0524-2955	Tunnel Phase 2 Zone 5 - LS + Preload	12	05-Sep-13	19-Sep-13	[Gantt bar: 05-Sep-13 to 19-Sep-13]																							
05.3 - Box Culvert T1																												
0530-3084	Bay 1 - Break Wall of Existing to Divert Flow	9	17-Jun-13 A	29-Jun-13	[Gantt bar: 17-Jun-13 A to 29-Jun-13]																							
0530-3086	Bay 1 - Instal Temporary Diversion Steel Pipe	12	02-Jul-13	15-Jul-13	[Gantt bar: 02-Jul-13 to 15-Jul-13]																							
0530-3408	Bay 1 - Demolish Existing Culvert	9	16-Jul-13	25-Jul-13	[Gantt bar: 16-Jul-13 to 25-Jul-13]																							
0530-3078	Bay 1 - ELS	12	26-Jul-13	08-Aug-13	[Gantt bar: 26-Jul-13 to 08-Aug-13]																							
0530-3079	Bay 1 - Base Slab Outside Existing	9	09-Aug-13	19-Aug-13	[Gantt bar: 09-Aug-13 to 19-Aug-13]																							
0530-3081	Bay 1 - Wall Roof Outside Existing	12	20-Aug-13	02-Sep-13	[Gantt bar: 20-Aug-13 to 02-Sep-13]																							
0530-3115	Bay 11 - Seawall	6	06-May-13 A	26-Jun-13	[Gantt bar: 06-May-13 A to 26-Jun-13]																							
0530-3116	Bay 9-11 - Backfilling	12	27-Jun-13	11-Jul-13	[Gantt bar: 27-Jun-13 to 11-Jul-13]																							
0530-3089	Bay 7 - Base Slab	0	29-Apr-13 A	08-Jun-13 A	[Gantt bar: 29-Apr-13 A to 08-Jun-13 A]																							
0530-3090	Bay 7 - Wall + Roof (Portion 1)	0	10-May-13 A	28-May-13 A	[Gantt bar: 10-May-13 A to 28-May-13 A]																							
0530-3091	Bay 7 - Wall + Roof (Portion 2)	0	29-May-13 A	07-Jun-13 A	[Gantt bar: 29-May-13 A to 07-Jun-13 A]																							
0530-3398	Bay 7 - Wall + Roof (Portion 3)	4	08-Jun-13 A	24-Jun-13	[Gantt bar: 08-Jun-13 A to 24-Jun-13]																							
0530-3095	Bay 8 - Sawcut D-wall	0	08-May-13 A	29-May-13 A	[Gantt bar: 08-May-13 A to 29-May-13 A]																							

- Remaining Level of Effort
- Actual Level of Effort
- Actual Work
- Remaining Work
- Critical Remaining Work
- ◆ Milestone

Contract HY/2009/19

Three Month Rolling Programme (20 Jun 2013 to 19 Sep 2013)

3MRP

3MRP - Jun 2013 to Sep 2013

Activity ID	Activity Name	Rem Dur	Start	Finish	2013																							
					June						July						August						September					
					0	27	03	10	17	24	01	08	15	22	29	05	12	19	26	02	09	16						
0530-3098	Bay 8 - Base Slab	0	08-May-13 A	05-Jun-13 A	Bay 8 - Base Slab																							
0530-3099	Bay 8 - Wall + Roof	4	06-Jun-13 A	24-Jun-13	Bay 8 - Wall + Roof																							
0530-3100	Divert and Abandon Existing Box Culvert T1	5	25-Jun-13	29-Jun-13	Divert and Abandon Existing Box Culvert T1																							
06 - SECTION 3 OF THE WORKS																												
06.1 - Westbound - Pier 29-34																												
0610-2110	Pier 29 Pre-drilling at Portion VB (4 nos)	24	15-Jul-13*	10-Aug-13	Pier 29 Pre-drilling at Portion VB (4 nos)																							
0610-2115	Pier 29 Approve Founding Level	18	12-Aug-13	31-Aug-13	Pier 29 Approve Founding Level																							
0610-2120	Pier 29 Bored Piles (4 nos)	48	02-Sep-13	30-Oct-13	Pier 29 Bored Piles (4 nos)																							
06.2 - Box Culvert U1																												
0620-2440	U1 Backfill Bay 6 to 8 + Extract Sheetpiles	0	20-Mar-13 A	24-May-13 A	U1 Backfill Bay 6 to 8 + Extract Sheetpiles																							
0620-2560	1500mm Drainage - Pile Laying + Manhole	5	20-May-13 A	25-Jun-13	1500mm Drainage - Pile Laying + Manhole																							
0620-2445	U1 Backfill Bay 5 + 1500mm Drainage + Extract Sheetpiles	12	25-Jun-13	10-Jul-13	U1 Backfill Bay 5 + 1500mm Drainage + Extract Sheetpiles																							
0620-2510	U1 Backfill Bays 11 + 12 + 13	3	20-Apr-13 A	22-Jun-13	U1 Backfill Bays 11 + 12 + 13																							
0620-2380	Divert and Abandon old U1 open channel at VB & III	5	25-Jun-13	02-Jul-13	Divert and Abandon old U1 open channel at VB & III																							
06.3 - Admin Building																												
0630-3100	Predrill for Adm Building (55 no) (4 set)	54	15-Jul-13*	14-Sep-13	Predrill for Adm Building (55 no) (4 set)																							
10 - SECTION X OF THE WORKS																												
10.1 - E/B Bridges (Bridge D, E and F)																												
10.1.1 - Marine Pier Construction																												
Pier F03 to F15																												
1011-2160	F3 Pier/Column Construction	0	20-May-13 A	29-May-13 A	F3 Pier/Column Construction																							
1011-2170	F3 Crosshead Construction	9	01-Jun-13 A	29-Jun-13	F3 Crosshead Construction																							
1011-2975	F3 Extract Temp Pile	9	19-Jul-13	29-Jul-13	F3 Extract Temp Pile																							
1011-2185	F4 Pile Cap Construction	0	02-May-13 A	06-Jun-13 A	F4 Pile Cap Construction																							
1011-2190	F4 Pier/Column Construction	0	10-Jun-13 A	17-Jun-13 A	F4 Pier/Column Construction																							
1011-2200	F4 Crosshead Construction	12	18-Jun-13 A	04-Jul-13	F4 Crosshead Construction																							
1011-2985	F4 Extract Temp Pile	9	30-Jul-13	08-Aug-13	F4 Extract Temp Pile																							
1011-3105	F5 Extract Temp Pile	7	09-Aug-13	16-Aug-13	F5 Extract Temp Pile																							
1011-2230	F5 Crosshead Construction	15	13-May-13 A	08-Jul-13	F5 Crosshead Construction																							
1011-2245	F6 Pile Cap Construction	7	13-May-13 A	27-Jun-13	F6 Pile Cap Construction																							
1011-2250	F6 Pier/Column Construction	12	28-Jun-13	12-Jul-13	F6 Pier/Column Construction																							
1011-2260	F6 Crosshead Construction	24	13-Jul-13	09-Aug-13	F6 Crosshead Construction																							
1011-2265	F6 Extract Temp Pile	7	17-Aug-13	24-Aug-13	F6 Extract Temp Pile																							
1011-2270	F7 Pile Cap Shutter Cofferdam	0	06-May-13 A	19-Jun-13 A	F7 Pile Cap Shutter Cofferdam																							
1011-2275	F7 Pile Cap Construction	12	20-Jun-13	04-Jul-13	F7 Pile Cap Construction																							
1011-2280	F7 Pier/Column Construction	12	05-Jul-13	18-Jul-13	F7 Pier/Column Construction																							
1011-2290	F7 Crosshead Construction	18	10-Aug-13	30-Aug-13	F7 Crosshead Construction																							
1011-2025	F7 Extract Temp Pile	7	26-Aug-13	02-Sep-13	F7 Extract Temp Pile																							
1011-2295	F8 Extract Temp Pile	9	20-Jun-13*	29-Jun-13	F8 Extract Temp Pile																							
1011-2300	F8 Pile Cap Shutter Cofferdam	15	10-Jun-13 A	08-Jul-13	F8 Pile Cap Shutter Cofferdam																							
1011-2305	F8 Pile Cap Construction	12	09-Jul-13	22-Jul-13	F8 Pile Cap Construction																							
1011-2310	F8 Pier/Column Construction	12	23-Jul-13	05-Aug-13	F8 Pier/Column Construction																							
1011-2320	F8 Crosshead Construction	18	10-Aug-13	30-Aug-13	F8 Crosshead Construction																							
1011-2345	Bearing installation pier F8	12	31-Aug-13	13-Sep-13	Bearing installation pier F8																							

- Remaining Level of Effort
- Actual Level of Effort
- Actual Work
- Remaining Work
- Critical Remaining Work
- ◆ Milestone

Contract HY/2009/19

Three Month Rolling Programme (20 Jun 2013 to 19 Sep 2013)

3MRP

3MRP - Jun 2013 to Sep 2013

Activity ID	Activity Name	Rem Dur	Start	Finish	2013																				
					June					July					August					September					
					0	27	03	10	17	24	01	08	15	22	29	05	12	19	26	02	09	16			
1031-1390	Bored pile D12-14 (low headroom)	0	10-Apr-13 A	28-May-13 A	Bored pile D12-14 (low headroom)																				
1031-1380	Bored pile D12-06 (low headroom)	15	04-Jun-13 A	08-Jul-13	Bored pile D12-06 (low headroom)																				
1031-1400	Bored pile D12-07 (low headroom)	26	30-May-13 A	07-Aug-13	Bored pile D12-07 (low headroom)																				
10.5 - Temporary Bridge																									
10.5.1 - Temporary Bridge 'TA'																									
1051-1011	Temporary Bridge TA1 - Footing	24	20-Jun-13	18-Jul-13	Temporary Bridge TA1 - Footing																				
1051-1009	Temporary Bridge TA1 - Fabrication Off-site	20	20-May-13 A	19-Jul-13	Temporary Bridge TA1 - Fabrication Off-site																				
1051-1012	Temporary Bridge TA1 - Steel Column	18	20-Jul-13	09-Aug-13	Temporary Bridge TA1 - Steel Column																				
1051-1015	Temporary Bridge TA1 - Bridge Deck	30	16-Aug-13	19-Sep-13	Temporary Bridge TA1 - Bridge Deck																				
10.6 - Tunnel Approach Ramp																									
10.6.1 - Approach Ramp (Excluding Portion IIB)																									
Bored Piles																									
1061-1550	Bored Pile Ramp - BN08	0	13-May-13 A	01-Jun-13 A	Bored Pile Ramp - BN08																				
1061-1560	Bored Pile Ramp - BN04	4	05-Jun-13 A	24-Jun-13	Bored Pile Ramp - BN04																				
1061-1570	Bored Pile Ramp - BN01	18	25-Jun-13	16-Jul-13	Bored Pile Ramp - BN01																				
1061-1580	Bored Pile Ramp - BN02	18	17-Jul-13	06-Aug-13	Bored Pile Ramp - BN02																				
1061-1590	Bored Pile Ramp - BN013	18	07-Aug-13	27-Aug-13	Bored Pile Ramp - BN013																				
1061-1600	Bored Pile Ramp - BN07	18	28-Aug-13	17-Sep-13	Bored Pile Ramp - BN07																				

- Remaining Level of Effort
- Actual Level of Effort
- Actual Work
- Remaining Work
- Critical Remaining Work
- ◆ Milestone

Contract HY/2009/19

Three Month Rolling Programme (20 Jun 2013 to 19 Sep 2013)

3MRP

3MRP - Jun 2013 to Sep 2013

Page 7 of 7

